



**SAGE PFW**

**INVENTORY PRO**

■ **STREAMLINED INTEGRATION**

Seamlessly integrates all aspects of your business operations to eliminate redundant data entry and automate your workflow.

■ **ENHANCED DATA ACCURACY AND COSTING CONTROL**

From the essential details to the big picture, this module has been designed to promote accurate data entry and inventory management.

■ **LEVERAGE PRICING PROMOTIONS**

Effectively analyze your inventory and determine product trends to plan strategic pricing promotions — maximizing your returns.

■ **POWERFUL INVENTORY PROCESSING**

Gain a competitive advantage — with Sage PFW you will enhance quality, service, product safety, and improve customer satisfaction by delivering more products on-time.

■ **AUTOMATIC PURCHASING**

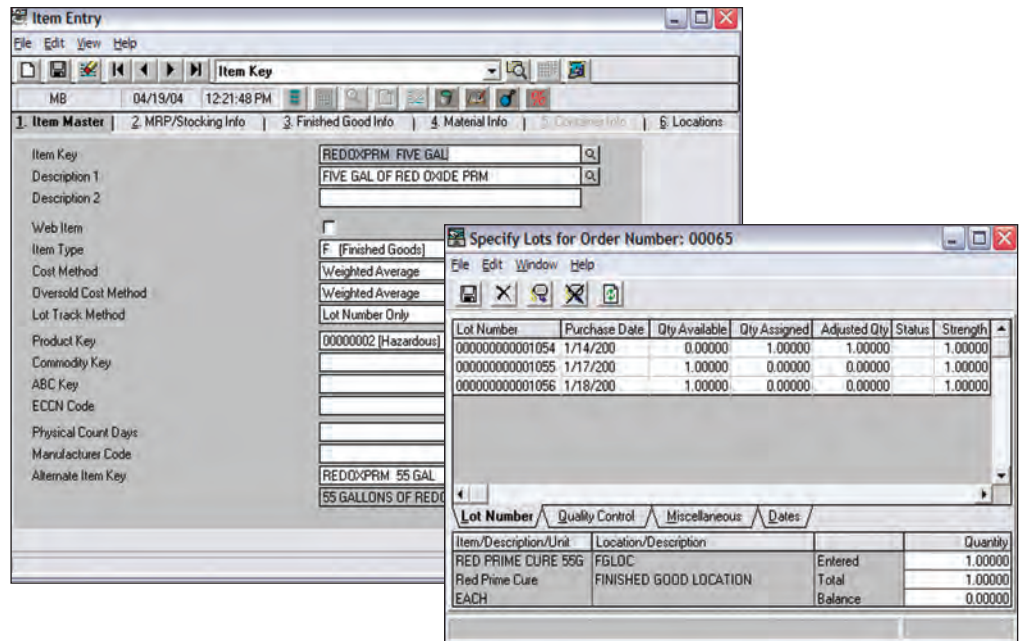
Eliminate costly manual errors and stay on top of your inventory stock levels by automating your purchasing process.

■ **PRECISION INVENTORY AND LOT TRACKING**

Sage PFW Inventory Pro empowers you with up-to-the-minute information on materials, containers, costs and finished goods, so you have the ability to operate with unprecedented efficiency and profitability.

■ **INSIGHTFUL REPORTS**

Transform your data into the insights you need to more effectively manage your business. Extensive, instant reporting capabilities provide the information you need for more strategic inventory management.



Effective management of your organization’s inventory is essential to succeed in the aggressive process manufacturing industry. Get the competitive edge you need utilizing comprehensive, highly flexible tools for strategic planning and handling of crucial tasks. Make smarter, more proactive decisions—Inventory Pro's powerful and precise capabilities put you in control of your inventory process, virtually eliminating overstock, waste and production delays. Sage PFW ERP satisfies your unique business requirements today and easily adapts to changes in the future.

Organize your inventory records quickly and easily using the versatile alphanumeric item key and reportable item class, product, commodity, specifications, and quality control data. Sage PFW provides unlimited warehouse locations and tracks pricing, cost, stock and order information for each item and location. Additionally, virtually unlimited physical properties can be defined for every raw material, including those relevant to food or chemical ingredients that are vital for MSDS or Nutrition Facts labels. You can automatically monitor inventory status for each item and location, such as available for sale, stock status, on hand, on order, and many more. You can also track user-defined quality control test and target values for each inventory item and automatically maintain the results by lot number. Most importantly, Inventory will empower you to analyze trends for those big picture insights that help you to boost your bottom line and plan more effectively for your company’s future.

Sage PFW is developed to meet the needs of your business, providing fast, dependable, customizable inventory management and data security. Unlike the majority of manufacturing software, Windows-based Sage PFW is the only software of its kind that was developed specifically to address the unique challenges of process manufacturing. For more information about Sage PFW and to reach a higher level of performance and profitability, please contact your local business partner, or call us directly toll free at 888-473-5135 or contact us via e-mail at [sagepfwinfo@sage.com](mailto:sagepfwinfo@sage.com). You may also visit our Web site at: [www.sagesoftware.com](http://www.sagesoftware.com)



# Sage PFW

## Inventory Pro

*"All of our data is tied together in one place. We know which items are in stock, and can give customers accurate lead times, which helps secure ownership of our niche in the marketplace."*

Adrienne Olson, Controller  
Sierra Corporation

### FEATURES

#### Streamlined Integration

As a fully integrated solution, Sage PFW Inventory Pro provides users with a complete view of inventory item status including, on-hand, committed-to-sales and committed-to-production quantities. Your sales personnel will have the ability to respond immediately and accurately during customer inquiries concerning what items are currently in stock and their price points. You can tie your inventory items to preferred vendors, sales tax keys and general ledger accounts to streamline data entry—saving you valuable time.

#### Enhanced Data Accuracy and Costing Control

Formulate strategic business decisions based on insight from accurate inventory and costing numbers. Powerful processing features include immediate data validation using visual red-flag alerts, unlimited transactions, serial/lot tracking, access to historical data, and an easy-to-use physical count process that supports cycle counting. Designed with the flexibility to meet the needs of today's diverse business environments, Inventory Pro supports LIFO, FIFO, Weighted Average, and Standard cost as specified on an item-by-item basis. You can also enter your starting costs at the same time that you enter and set your items, including base price, standard cost, market cost, carrying cost and reorder cost. Transactions are recorded and processed at the individual level, making costing even more comprehensible. Processing transactions automatically updates costing and inventory quantities for accurate costing and stock levels.

#### Leverage Pricing Promotions

Access to detailed inventory records allows your company to quickly and easily identify which merchandise to market and stock, or discontinue. Pricing promotions allow you to effectively market the products you want to move through inventory to maximize your profitability. Sage PFW reporting gives you the insight you need to determine what products you should promote. In addition, direct integration with the Accounts Receivable module offers powerful pricing functionality that will allow you to offer volume discounts, price specials and commission incentives, discounts for specific inventory items, locations and customers. Additionally, percent or dollar volume discounts can be set up for selected customers and customer classifications, items and inventory classifications. These are just a few of the possibilities that will set your sales and profits soaring.

#### Powerful Inventory Processing

Transaction processing supports supplemental transactions such as inventory transfers, excess and obsolete inventory tracking, adjusting inventory for damage and shrinkage, and attaching additional costs to inventory purchases. Adjustments, credit memo, debit memo, cost adjustment, damaged material, and purchase are also easily processed. Various time-saving utilities, such as SOPF generation and physical count processing, promote overall efficiency.

#### Automatic Purchasing

When you tie Inventory Pro with our Material Requirements Planning (MRP) module, your fantasy of always having sufficient inventory to meet your production demands, without incurring the excessive carrying costs, can become a reality. You can determine precisely when and how much material you need to purchase based on a time-phased analysis of sales orders, production orders, current inventory and forecasts. Accurate, powerful, integrated, and reliable—it's everything you need from your process manufacturing software and more.

#### Precision Inventory and Lot Tracking

Precision inventory and lot tracking saves you money by reducing the costs of overstocking and waste, and prevents expensive production delays caused by inventory shortages. You can track inventory by virtually any specification, including on hand, on order, committed to sales, committed to production, minimum, maximum, reorder points, class, lead time, vendors, base price, and last, average, standard costs and item status. Inventory items purchased with a lot number can be tracked, by lot, through production and into finished goods. Complete lot tracking of all inventory items includes material and product expiration dates, quarantine dates, quality control status, SSCCs and lot strength factor. Empower your organization with the tools required to maintain tight inventory control and reap the benefits in your bottom line.

#### Insightful Reports

Extensive reporting capabilities provide the insights you need to optimize stock levels and mindfully control your inventory processes. Robust reporting tools in Sage PFW provide quick and easy access to critical business information, as all reports can be tailored to your specifications using a variety of user-defined parameters. You can easily monitor the activity, status, valuation and month-to-month sales history of any inventory item including carrying costs past demand and seasonal fluctuations. Sage PFW utilizes one of the most powerful reporting tools on the market—Business Objects™ Crystal Reports®—providing the ability to quickly distribute information via e-mail, export data in more than 20 formats, and easily customize reports to your unique business requirements.

