



SAGE PFW

CUSTOMIZATION WORKBENCH

■ **STREAMLINED EFFICIENCY**

Maximize efficiency and productivity with customization tools that empower you to tailor your system components to meet your company's business processes and changing needs.

■ **SMART DATA APPLICATIONS**

Build intelligence into your lookup screens and use powerful wizards to build smart filtering into custom reports and listings—turning your data into business intelligence. Optimal organization is smart and easy with custom tabs and flexible menu organization.

■ **FLUENT LANGUAGE CAPABILITIES**

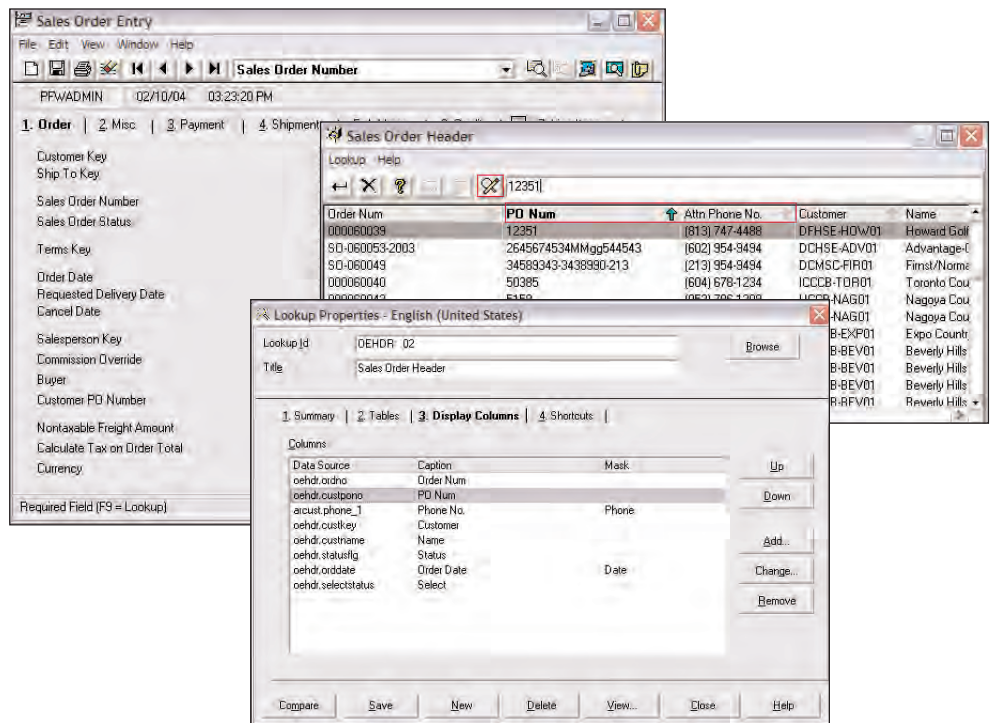
Exceptional translation and industry term capabilities simplify the complexities of multi-lingual and unique industry operations.

■ **SEAMLESS INTEGRATION**

Create a total business solution with Customization Workbench. Install upgrades while maintaining your customizations and easily integrating add-on applications.

■ **INSIGHTFUL REPORTS**

Accurate analysis of your operations enables you to make stronger business decisions. Combine the power of Crystal Reports and Customization Workbench to transform your data into the insights that you require to more effectively manage your business.



While all Sage PFW applications have been designed to be easily customizable, you may desire more extensive product modifications that meet your unique business requirements. Sage PFW Customization Workbench provides all the tools you need to tailor the system to your company's specifications. Customize menus, lookup screens and text, along with adding parameter screens that allow Crystal Report® documents to be accessed directly from Sage PFW. There's even a feature that helps developers integrate their add-on applications.

Additional customizations capabilities allow you to take advantage of ActiveX Controls to access Sage PFW data from other applications. For instance, you may want to add a button that links the Sage PFW customer file to an invoice form designed in Microsoft Excel. You can even require logging into Sage PFW prior to viewing the customer records. Customization Workbench empowers you to design your system for maximum efficiency and productivity. As you expand your system's functionality with the virtually unlimited options of Customization Workbench, you'll be able to gain valuable insights from your data, which will help you guide your company toward greater success.

From developing innovative products that anticipate the changing needs of customers to providing award-winning customer support, Sage PFW Software is dedicated to surpassing your expectations. Rest assured, a nationwide network of specialists who are your resource for implementation, training, service and support stand ready to assist your software and business management objectives. For more information about Sage PFW and to reach a higher level of performance and profitability, please contact your local business partner, or call us directly toll free at 888-473-5135. You may also visit our Web site at: www.sagesoftware.com or e-mail us at: sagepfwinfo@sage.com



Sage PFW

Customization Workbench

"System integration has eliminated [hand-entering information from one system to another] and cut our total order processing time by about half. What we have now is a 100 percent improvement."

Adrienne Olson
Controller
Sierra Corporation

FEATURES

Streamlined Efficiency

Your system is only as valuable as it is effective within your business environment. Extensive customization tools ensure that you have the flexibility you need for maximum efficiency and productivity. With the Menu Item Properties Utility you can add, modify or delete menu items, as well as add custom programs, Crystal Reports, or even attach programs you use from other systems to Sage PFW. You have the freedom to create and edit lookup windows, add new tabs and menu options, and add indexes to existing files. These are just a few of the possibilities that can set productivity soaring throughout your organization.

Smart Data Applications

Turn data into business insights with smart applications such as the Lookup Properties Utility and the Dictionary Editor. You can modify default indexes to sort data by a different index. For example, easily modify the Customer Lookup to allow you to find customer records using their phone number. Additionally, you can join data together so that all data displays within each link file, modify fields and tables in the Sage PFW Data Dictionary, and import and export to Pervasive.SQL DDF files. Capitalize on these powerful tools to create data options that match the way you run your business and maximize the performance of your system.

Fluent Language Capabilities

Transcend many of the operational challenges of transacting business in a multi-lingual environment with Customization Workbench. Language Editor and Translation tools enable you to add, modify or delete master language components, strings, and captions so that you can run Sage PFW in multiple languages. You can translate languages and create a phrase dictionary to facilitate and automate translations, as well as modify text options to recognize industry-specific terms. These powerful features give you the competitive edge to succeed in the global marketplace.

Seamless Integration

Quick and easy integration of custom or third-party applications has made Customization Workbench popular among programmers and managers alike. With ActiveX Components, you can create custom programs that access standard Sage PFW functions such as Login, Lookup Server (Zooms) and the Viewer. Customizations and add-ons created using Customization Workbench are stored separately from the original system, which allows you to easily preserve changes when upgrading to newer versions. Customization Workbench incorporates collaboration between your software solutions and enables you to more effectively manage your business.

Insightful Reports

Quickly and easily tailor standard reports or create new reports to satisfy your unique business requirements. Sage PFW ships with a single user license of Crystal Reports Designer—a robust reporting toolkit that helps you design flexible, feature-rich reports. Its proven query technology gives you easy access to your Sage PFW database. Create professional-looking dynamic reports that meet the unique needs of your organization. Crystal Reports combined with Customization Workbench make accessing custom reports directly from Sage PFW a snap. Leverage custom reporting to easily create intuitive user interface screens that enable you to search and sort data in your custom reports. These custom interface screens allow you to incorporate filters, checkbox options, multiple sort orders and other versatile features. You control the appearance, contents and functionality of the new screens. Furthermore, your custom designed screens will have the same look and feel as standard Sage PFW menu items—enabling smooth integration and reducing training requirements. You can even take advantage of Sage PFW security features to assign user access to your custom menu items. You'll gain new insights from your business intelligence by working smarter, not harder, with Customization Workbench.

